
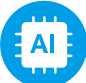






Pan/Tilt AI Home Security Wi-Fi Camera

Model: Tapo C225

Secure. Smart. Easy.

-  Physical Privacy Mode
-  Smart AI Detection and Notification
-  Smart Motion Tracking
-  Starlight Sensor



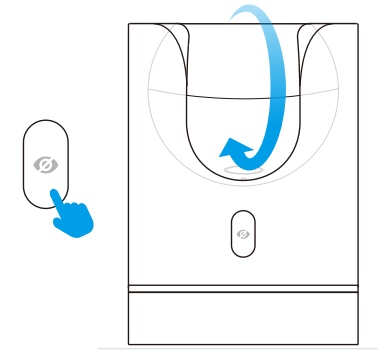
// Highlight

Physical Privacy Mode

Maintain privacy with the lens blocked by the housing when physical privacy mode is enabled.

Smart AI Detection and Notification

Smart AI identifies people, pets, and vehicles while also recognizing abnormal sounds, notifying users as needed.



// Features



850nm or 940nm Night Vision
Switch to the 940nm IR LED to watch over your baby without interrupting their sleep



Smart Motion Tracking
Tracks and follows a subject, keeping it within the camera's field of view



Field of View
360° horizontal range



Privacy Zone
Block customizable zones from being recorded



Activity Zone
Notifies you when activity is detected in specific zones



Cross-Line Detection
Notifies you when passing set boundaries



Sound and Light Alarm
Trigger sounds and light as an alarm when motion is detected



Two-Way Audio
Enables communication through a built-in microphone and speaker



Easy Setup
Follow the in-app instructions to easily set up in minutes

// Specifications

Camera

- Image Sensor: 1/3"
- Resolution: 2K QHD (2560 × 1440 px)
- Night Vision: 850 nm IR LED or 940 nm IR LED
- Lens: F/NO: 1.6±5%; Focal Length: 4mm±5%
- View Range: 360° Horizontal, 149° Vertical

Audio

- Audio Communication: two-way audio
- Audio Input & Output: Built-in microphone and speaker

Video

- Video Compression: H.264
- Frame Rate: 2560×1440@15fps
- Video Streaming: 2K QHD
- Audio Compression: G.711

Activity Notifications

- Input Trigger: Motion Detection, Person Detection, Line-Crossing Detection, Camera Tampering, Baby Crying Detection, Vehicle Detection, Pet Detection, Cat Meows Detection, Dog Bark Detection, Glass Break Detection.
- Output Notification: Notification, Snapshot(Tapo Care), Clips(Tapo Care).

Network

- Wireless Protocols: IEEE 802.11b/g/n, 2.4 GHz
- Frequency: 2.4 GHz
- Wireless Security: WPA/WPA2-PSK
- Security: 128 bit AES encryption with SSL/TLS
- Protocol: TCP/IP, DHCP, ICMP, DNS, NTP, HTTPS, TCP, UDP, ONVIF

// Specifications

Hardware

- Camera Button: Reset/ Privacy Button
- Camera Indicator LED: System LED
- Camera Adapter Input: 100-240V, 50/60Hz
- Camera Adapter Output: 12 V, 1.0A (DC Power)
- External Storage: microSD card slot †(Supports up to 512 GB)
- Camera Dimensions (Lx W x H): 3.15 x 3.15 x 4.41in. (80*80*112mm)

†microSD card needs to be purchased separately.

**Tapo Care needs to be subscribed separately.

Specifications are subject to change without notice. All brands and product names are trademarks or registered trademarks of their respective holders.

©2022 TP-Link

Others

- Certification: CE, RoHS, RCM, WEEE, EAC

- Package Contents:

Tapo C225 Camera

DC Power Adapter

Quick Start Guide

Mounting Screws

Mounting Template

Camera Base

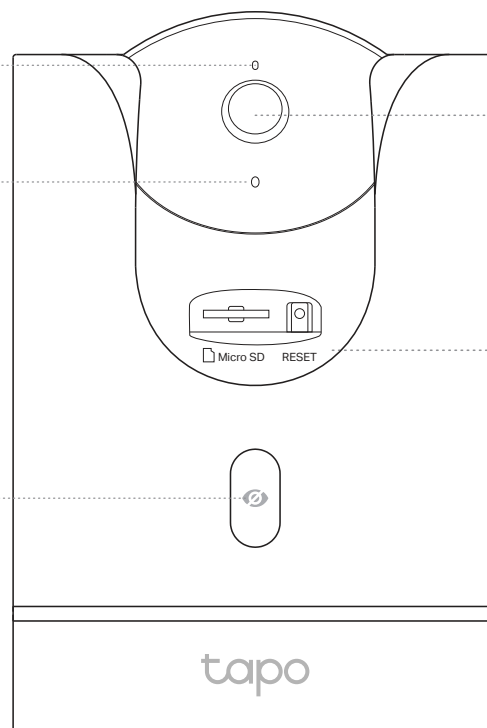
- Operating Temperature: 0 °C ~40 °C (32°F ~104 °F)
- Storage Temperature: -20 °C ~60 °C (-4°F~140°F)
- Operating Humidity: 10%~90%RH, Non-condensing
- Storage Humidity: 5%~90%RH, Non-condensing

// Device Appearance

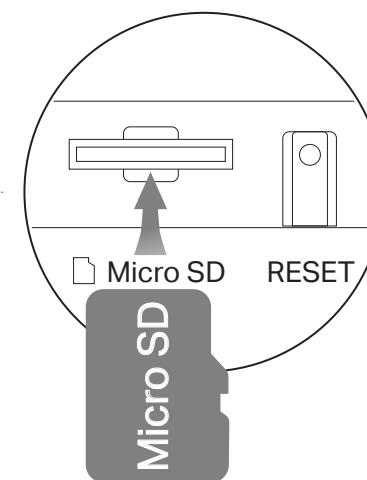
System LED

Microphone

Privacy Mode Button



Lens



Note: Tilt the camera lens up to find the RESET button and the microSD card slot.