



Datenblatt - Fiche technique - Data sheet

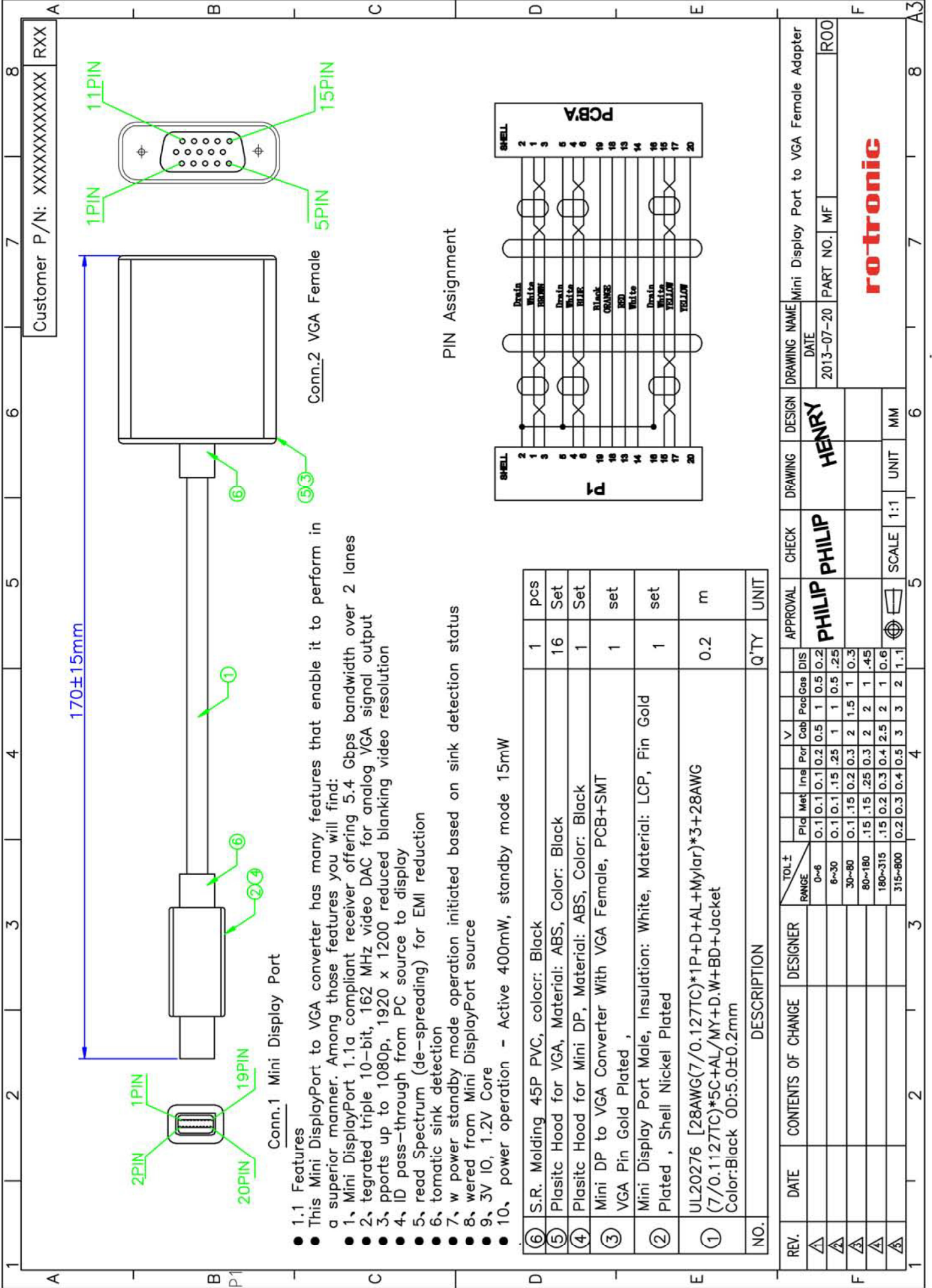
12.99.3125



VALUE Mini DisplayPort-VGA Adapter, Mini DP ST - VGA BU

VALUE Adaptateur Mini DisplayPort-VGA, MiniDP M - VGA F

VALUE Cableadapter, Mini DP M - VGA F



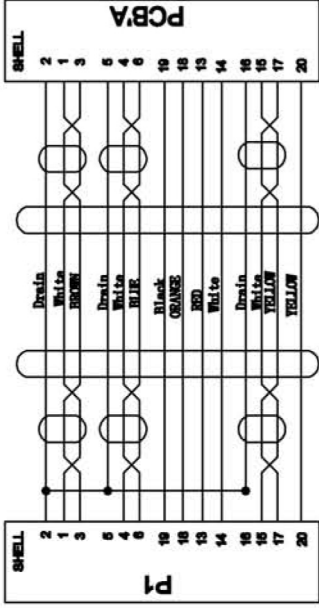
Customer P/N: XXXXXXXXXXXXX RXX

Conn.1 Mini Display Port

Conn.2 VGA Female

- 1.1 Features**
- This Mini DisplayPort to VGA converter has many features that enable it to perform in a superior manner. Among those features you will find:
 - Mini DisplayPort 1.1a compliant receiver offering 5.4 Gbps bandwidth over 2 lanes
 - tegrated triple 10-bit, 162 MHz video DAC for analog VGA signal output
 - ports up to 1080p, 1920 x 1200 reduced blanking video resolution
 - ID pass-through from PC source to display
 - read Spectrum (de-spreading) for EMI reduction
 - omatic sink detection
 - w power standby mode operation initiated based on sink detection status
 - wired from Mini DisplayPort source
 - 3V IO, 1.2V Core
 - power operation - Active 400mW, standby mode 15mW

PIN Assignment



⑥	S.R. Molding 45P PVC, color: Black	1	pcs
⑤	Plastic Hood for VGA, Material: ABS, Color: Black	16	Set
④	Plastic Hood for Mini DP, Material: ABS, Color: Black	1	Set
③	Mini DP to VGA Converter With VGA Female, PCB+SMT VGA Pin Gold Plated ,	1	set
②	Mini Display Port Male, Insulation: White, Material: LCP, Pin Gold Plated , Shell Nickel Plated	1	set
①	UL20276 [28AWG(7/0.127TC)*1P+D+AL+Mylar]*3+28AWG (7/0.127TC)*5C+AL/MY+D.W+BD+Jacket Color:Black OD:5.0±0.2mm	0.2	m
NO.	DESCRIPTION	Q'TY	UNIT

REV.	DATE	CONTENTS OF CHANGE	DESIGNER	TOL.± RANGE	Pld	Met	Ins	Por	Cob	Pac	Gas	DIS	APPROVAL	CHECK	DRAWING	DESIGN	DRAWING NAME	DATE	Mini Display Port to VGA Female Adapter	PART NO.	MF	ROO	
△				0~6	0.1	0.1	0.2	0.5	1	0.5	0.2		PHILIP	PHILIP	HENRY		2013-07-20						
△				6~30	0.1	0.1	.15	.25	1	1	0.5	.25											
△				30~80	0.1	.15	0.2	0.3	2	1.5	1	0.3											
△				80~180	.15	.15	.25	0.3	2	2	1	.45											
△				180~315	.15	0.2	0.3	0.4	2.5	2	1	0.6											
△				315~800	0.2	0.3	0.4	0.5	3	3	2	1.1											
													SCALE	1:1	UNIT	MM							
													rotronic										