





AX3000 Multi-Gigabit Wi-Fi 6 Router

Faster. Broader. Unstoppable.




Archer AX55 Pro

 Super-Fast Wi-Fi
Up to 3 Gbps[†]

 Broad Coverage
4 High-Performance Antennas

 Connect More Devices
with OFDMA[‡]

 Easy Sharing with
a USB 3.0 Port

Highlights

Wi-Fi 6^E Faster. Broader. Unstoppable.

The Archer AX55 Pro, based on the next generation Wi-Fi 6 (802.11ax) technology, takes your Wi-Fi to the next level while being backwards compatible with previous generations (802.11 a/b/g/n/ac standards) Wi-Fi.



Super Fast Wi-Fi

Enjoy full access to 8K streaming and high-speed downloading with HE160 on the 5 GHz band providing doubled bandwidth.‡



Connect Numerous Devices

Allow more applications to run at the same time. OFDMA transmits data to multiple devices simultaneously across 4 streams, drastically reducing latency.‡



Save Smart Devices' Power

Conserve the power of your mobile devices by scheduling the connection time of battery-powered devices with Target Wake Time.‡



Backwards Compatible

Take your Wi-Fi to the next level while being backwards compatible with existing 802.11 a/b/g/n/ac Wi-Fi standards.

TP-Link HomeShield

TP-Link's premium security services keep your home network safe with cutting-edge features for network and IoT protection.[^]



Network Protection

Detect cyber threats to keep your privacy and connected devices well protected.



Quality of Service (QoS)

Prioritize your bandwidth needs to get a better networking experience.



Parental Controls

Manage online time and block inappropriate content to control your family's digital habits.



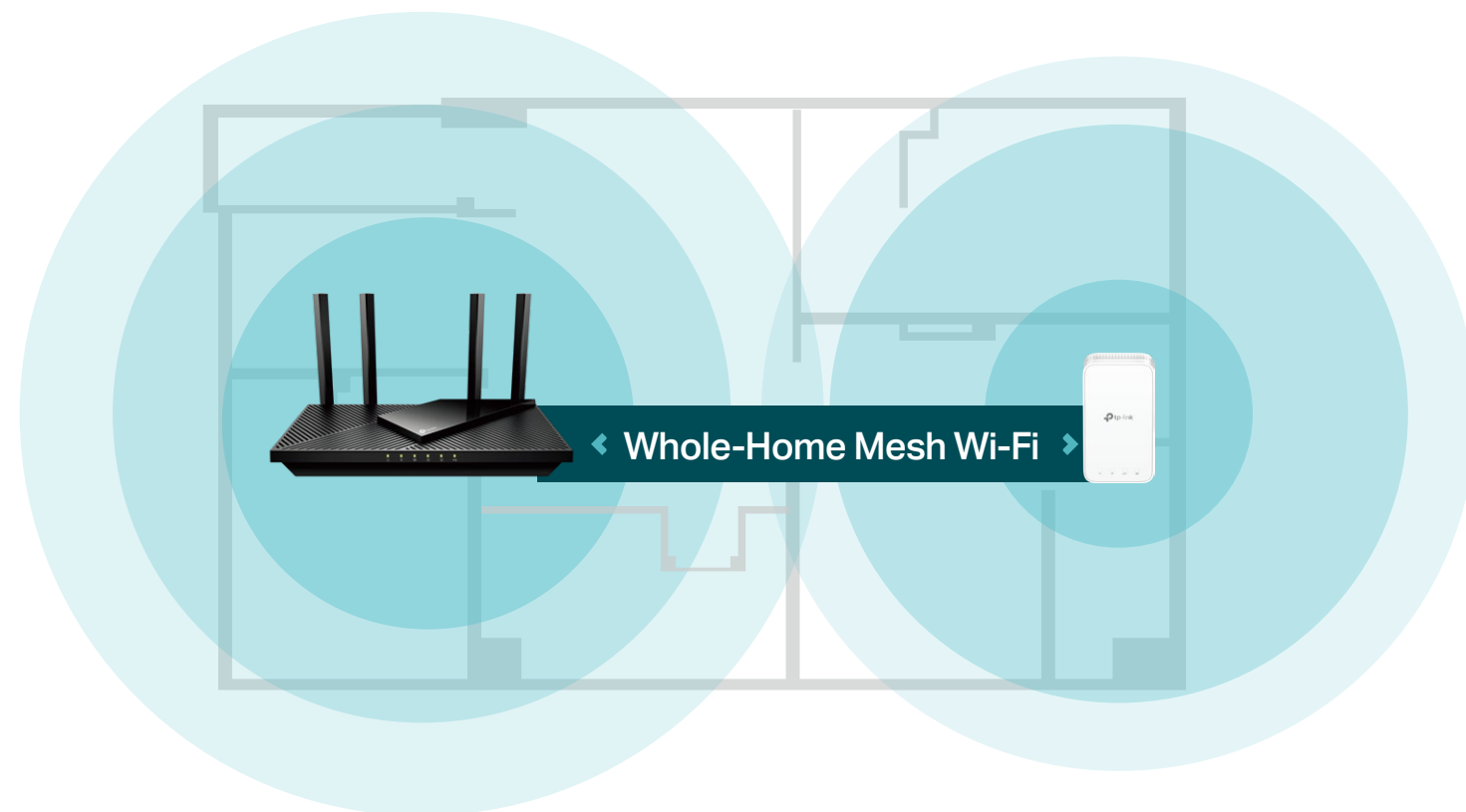
Comprehensive Reports

Gain full statistics and insights to help you understand your home network.

Highlights

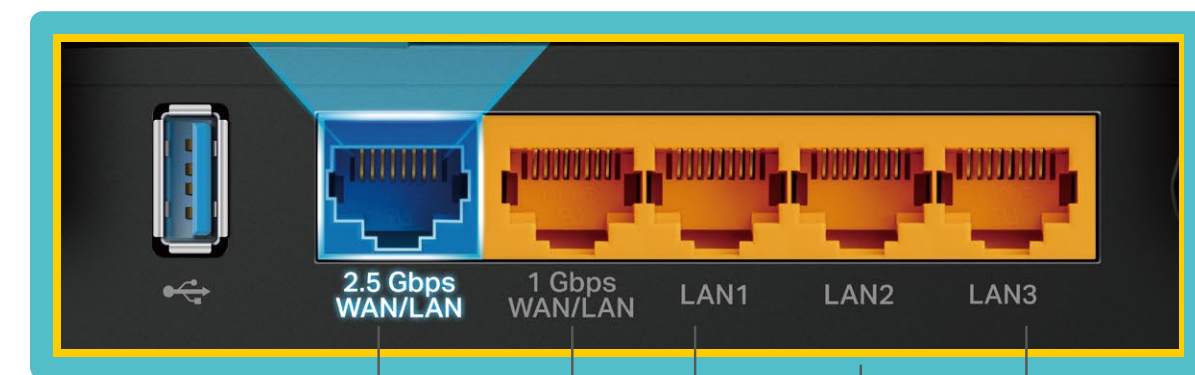
Flexible Whole-Home Wi-Fi

Four high-performance antennas and Beamforming deliver broad coverage. Furthermore, Archer AX55 Pro supports OneMesh™ to form seamless whole-home coverage, preventing drops and lag when moving between signals.



Multi-Gig Internet Connection

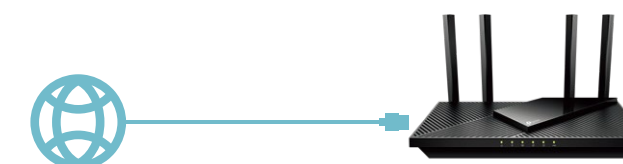
A 2.5 Gbps port and 1 Gbps port make full use of gigabit speeds from your local ISP. Break through the 1G bottleneck and drive your devices to peak performance. WAN/LAN support gives you remarkable flexibility to tailor both ports to fit your network's needs.[§]



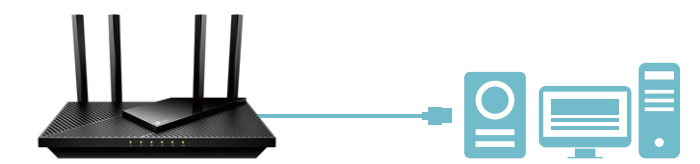
**2.5 Gbps
WAN/LAN**

**Gigabit
WAN/LAN**

**3× Gigabit
LAN Ports**



Multi-Gig Internet Access

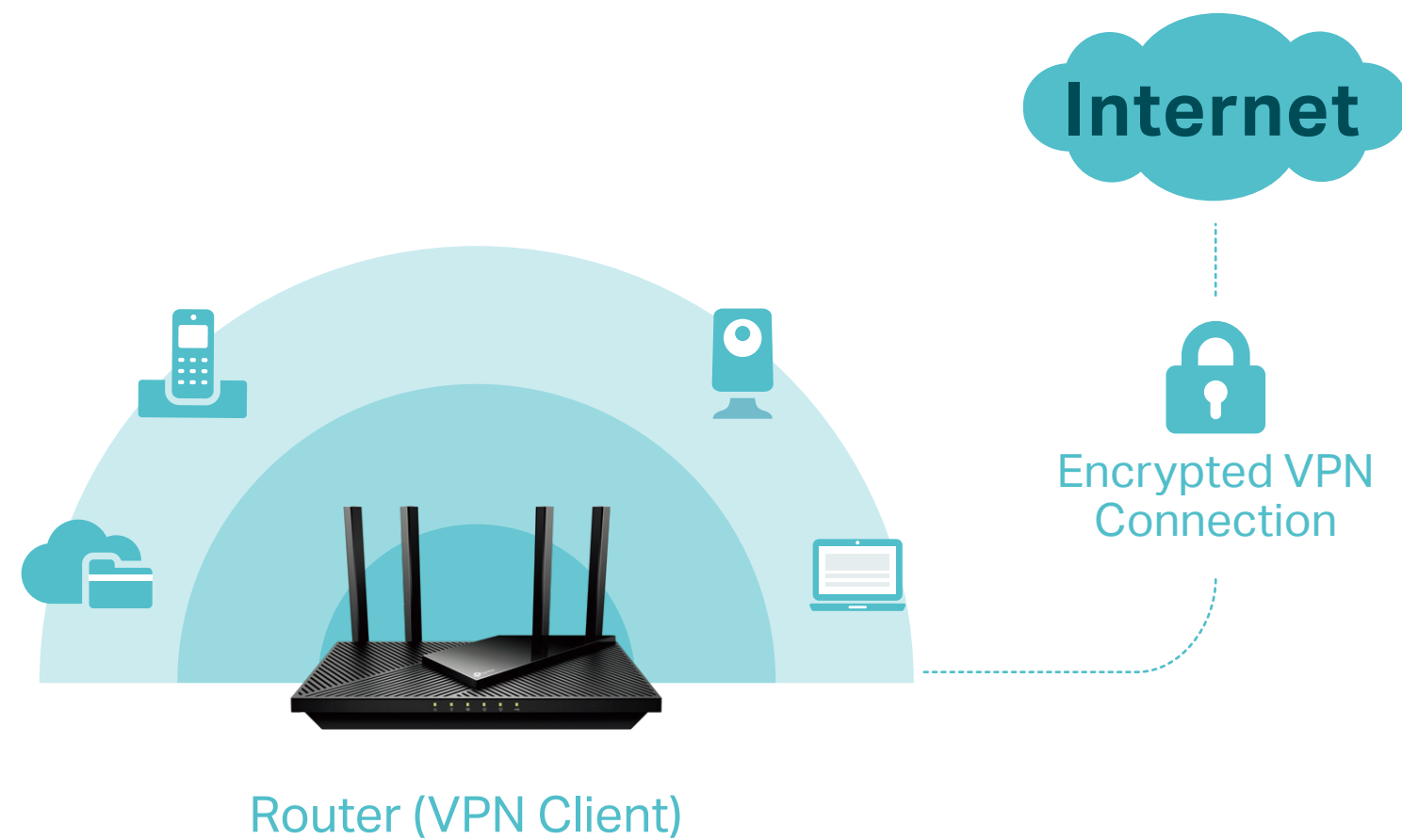


2.5 Gbps Wired Connection

Highlights

VPN Client Supported

With VPN client support, AX55 Pro allows specified devices in your home network to access remote VPN servers without needing to install VPN software on every device. AX55 Pro can also run both the VPN and ordinary internet connections at the same time, delivering security and flexibility.



WPA3 Security

The latest Wi-Fi security protocol, WPA3, brings new capabilities to improve cybersecurity. More secure encryption in Wi-Fi password safety and enhanced protection against brute-force attacks combine to safeguard your home Wi-Fi.**



Features



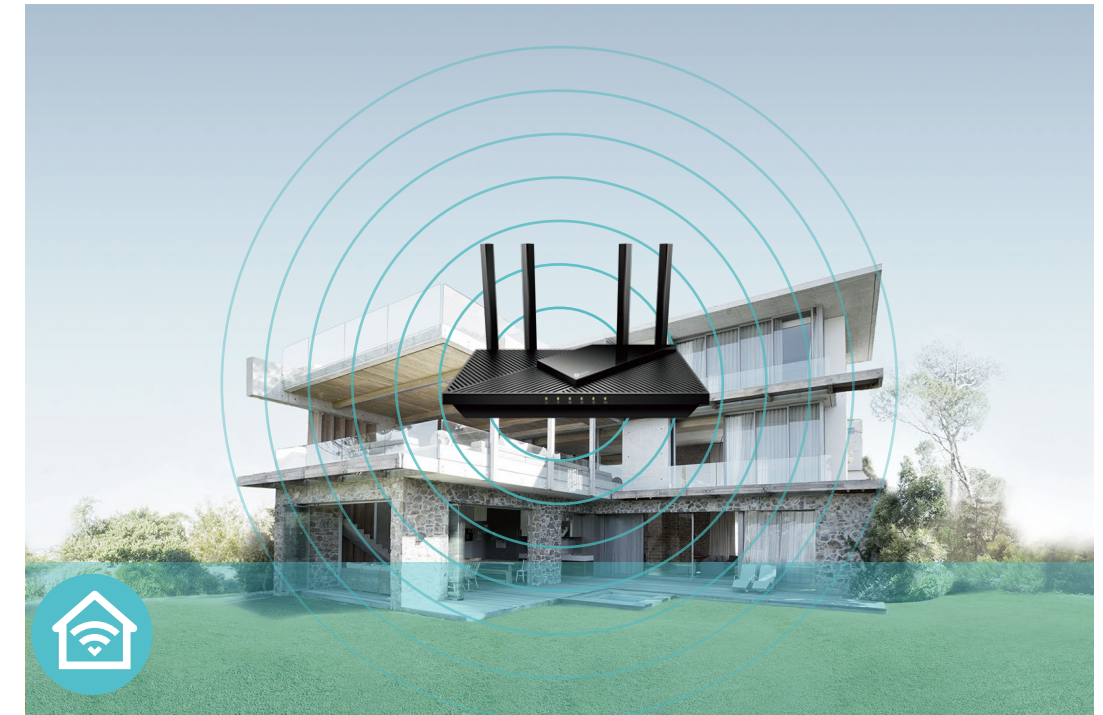
Unmatched Speeds

- **AX3000 Wi-Fi 6 Speed** – 3.0 Gbps Wi-Fi for faster browsing, streaming, and downloading—all at the same time.[†]
- **Wi-Fi 6 Technology** – Wi-Fi 6 (802.11ax) features advanced technologies, including OFDMA, HE160, and 1024-QAM, drastically increasing the speed and efficiency.[‡]
- **160 MHz Channel** – Double the data at peak transmission time on a single stream.[‡]
- **Smart Connect** – Intelligently assigns each device to the best Wi-Fi band for optimal performance.
- **Multi-Gig Internet Connection** – A 2.5 Gbps port and 1 Gbps port make full use of gigabit speeds from your local ISP. Break through the 1G bottleneck and drive your devices to peak performance.



High Capacity and Reliable Connections

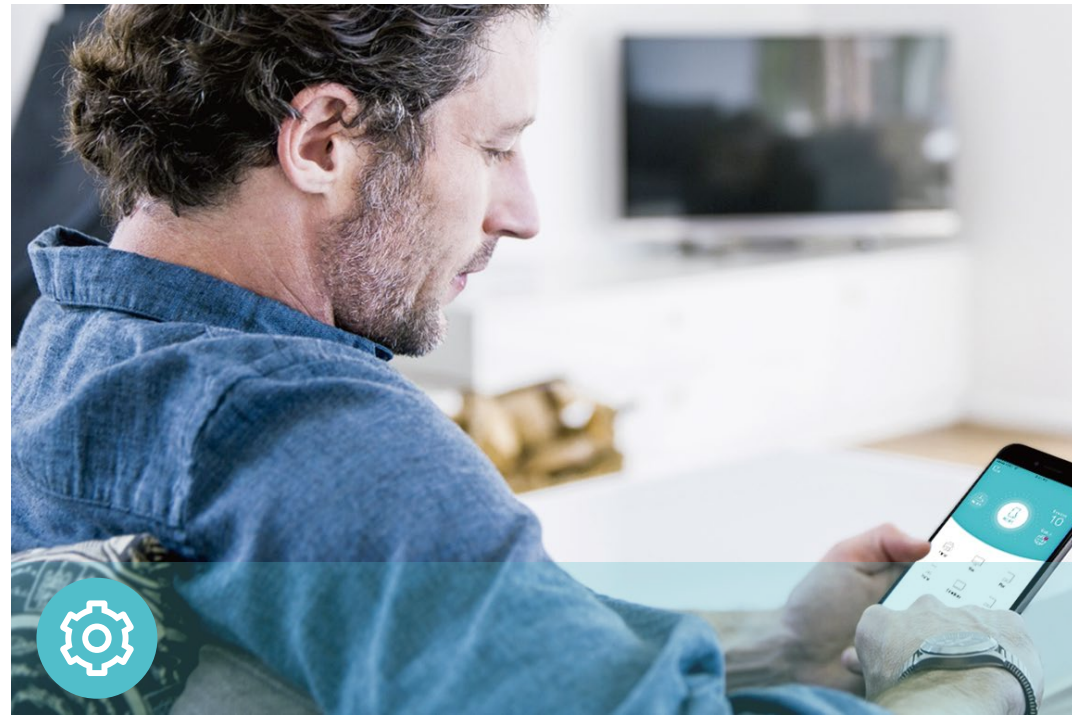
- **Powerful Processing** – High-performance Qualcomm CPU provides the processing ability to handle enormous data throughput and minimizes the lag within your home network.
- **Connect More, Stay Fast** – Supports OFDMA to reduce congestion and quadruple your average throughput.[§]
- **Airtime Fairness** – Balances bandwidth of connected devices to improve overall throughput and efficiency.
- **Improved Cooling Design** – A larger heat sink and refined case design cool the Wi-Fi 6 system for more stable operation.



Broad Wi-Fi Range

- **Ultimate Range Wi-Fi** – Four high-gain external antennas and 4× high-power FEM deliver a Wi-Fi signal to every corner of your home, making all of your connections more efficient and stable.
- **Beamforming Technology** – Concentrates Wi-Fi signals towards individual devices to ensure stronger connections.
- **Seamless OneMesh network** – Transfer between signals without any drops or lag and manage your whole network using a centralized panel.

Features



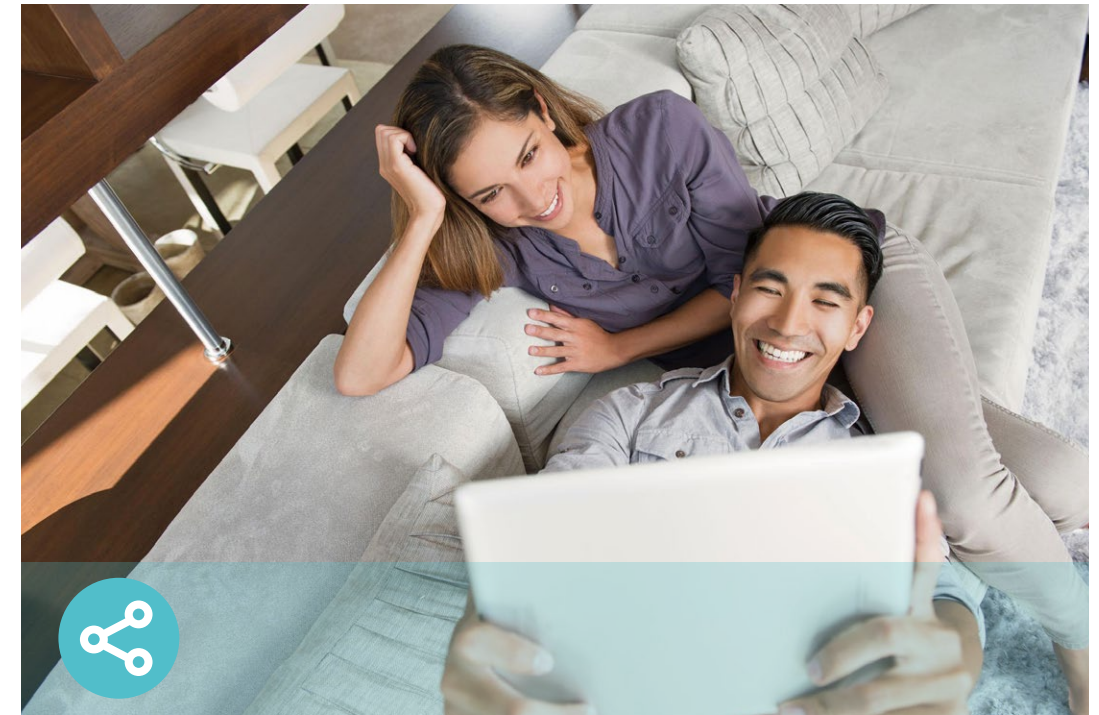
Ease of Use

- Hassle-free Management with Tether App – Network management is made easy with the TP-Link Tether app, available on any Android and iOS device.
- Intuitive Web UI – Ensures quick and simple installation without hassle.
- WPS (Wi-Fi Protected Setup) – Help you to quickly and securely connect your devices to the router's network with a tap.
- Backwards Compatible – Take your Wi-Fi to the next level while being backwards compatible with existing 802.11 a/b/g/n/ac Wi-Fi standards.
- Works with Amazon Alexa and Google Assistant – Utilize Amazon Alexa and Google Assistant to control everything via voice commands to enjoy truly intelligent life.



Robust Security

- HomeShield – TP-Link's premium security services keep your home network safe with cutting-edge features for network and IoT protection.*
- Parental Controls – Manage online time and block inappropriate content to control your family's digital habits.
- Guest Network – Provides separate access for guests to secure the home network.
- Advanced WPA3 Encryptions – The latest WiFi security protocol, WPA3, brings new capabilities to improve cybersecurity in personal networks.**
- Access Control – Establishes a whitelist or blacklist to allow or restrict certain devices to access the internet.



Value-Added Features

- USB 3.0 Port – Connect external storage devices to rapidly share files, photos, and videos.
- Built-in Media Server – Allows you to play music, watch videos and view photos from any device on your network.
- More Values – Advanced functions like IPTV, IPv6 compatibility, and Access Point mode bring more values.

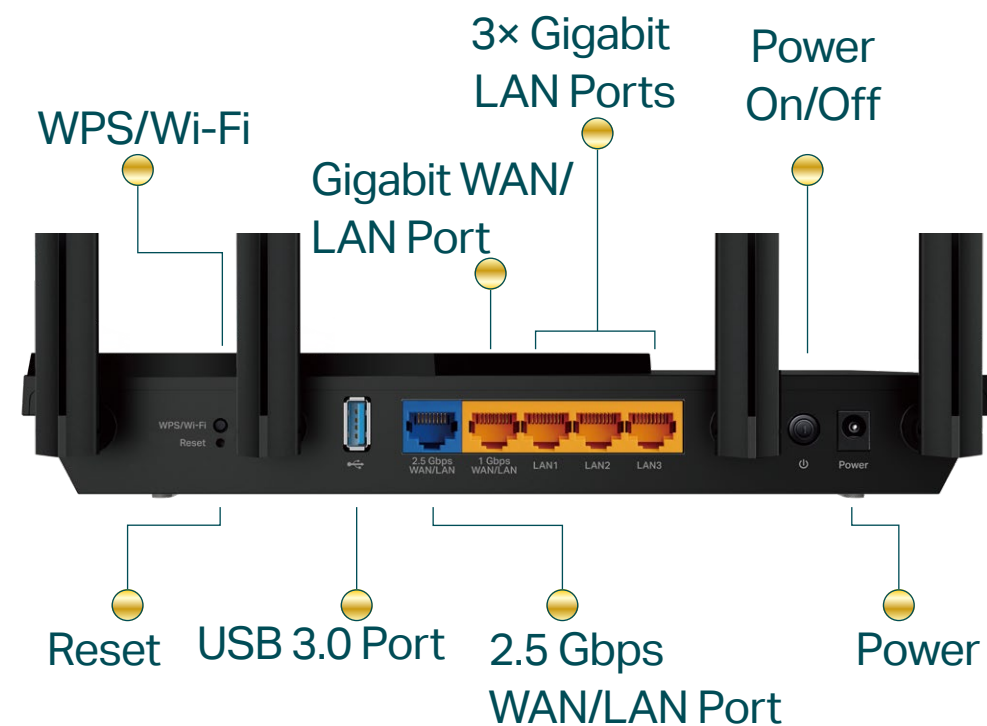
Specifications

Wireless

- Standards: IEEE 802.11ax/ac/n/a 5 GHz, IEEE 802.11ax/n/b/g 2.4 GHz
- WiFi Speeds: 2042 Mbps (5 GHz) + 574 Mbps (2.4 GHz)[†]
- WiFi Range: 4× Fixed High-Performance Antennas, Beamforming
- WiFi Capacity: Dual-Band, OFDMA, Airtime Fairness, DFS, 4 Streams
- Working Modes: Router Mode, Access Point Mode

Hardware

- Ethernet Ports: 1× 2.5 Gbps WAN/LAN Port, 1× 1 Gbps WAN/LAN Port, 3× 1 Gbps LAN Ports
- USB Support: 1× USB 3.0 Port
- Buttons: WPS Button, Wi-Fi On/Off Button, Reset Button, Power On/Off Button
- Power: 12 V/ 2 A (US Version), 12 V/ 1.5 A (EU Version)



Security

- WiFi Encryption: WPA, WPA2, WPA3, WPA/WPA2-Enterprise (802.1x)
- Network Security: SPI Firewall, Access Control, IP & MAC Binding, Application Layer Gateway, HomeShield Security
- Guest Network: 1× 5 GHz Guest Network, 1× 2.4 GHz Guest Network
- VPN Client and Server: OpenVPN, PPTP, L2TP

Software

- Protocols: IPv4, IPv6
- Service Kits: HomeShield
- OneMesh: Supported
- Parental Controls: HomeShield Parental Controls
- WAN Types: Dynamic IP, Static IP, PPPoE, PPTP, L2TP
- Quality of Service: QoS by Device
- Cloud Service: Auto Firmware Upgrade, TP-Link ID, DDNS
- NAT Forwarding: Port Forwarding, Port Triggering, DMZ, UPnP
- DDNS: TP-Link, NO-IP, DynDNS

Specifications

Physical

- Dimensions (W×D×H): 10.2 × 5.3 × 1.5 in (261.1 × 134.5 × 41.0 mm)
- Package Contents:
 - Wi-Fi Router Archer AX55 Pro
 - Power Adapter
 - RJ45 Ethernet Cable
 - Quick Installation Guide

Other

- System Requirements:
 - Internet Explorer 11+, Firefox 12.0+, Chrome 20.0+, Safari 4.0+, or other JavaScript-enabled browser
 - Cable or DSL Modem (if needed)
 - Subscription with an internet service provider (for internet access)
- Certifications: FCC, CE, RoHS
- Environment:
 - Operating Temperature: 0°C~40°C (32°F ~104°F)
 - Operating Humidity: 10%~90% non-condensing



For more information, please visit

<http://www.tp-link.com/products/details/Archer-AX55-Pro.html>

or scan the QR code left

Test Data

- WiFi Transmission Power:
 - FCC: <24dBm (5.25GHz~5.35GHz&5.47GHz~5.725GHz), <30dBm (5.15GHz~5.25GHz&5.725GHz~5.850GHz), <30dBm (2.4GHz)
 - CE: <23dBm (5.15GHz~5.25GHz & 5.25GHz~5.35GHz), <30dBm (5.47GHz~5.725GHz), <20dBm (2.4GHz)
- WiFi Reception Sensitivity:
 - 2.4 GHz:
 - 11ac VHT20 MCS0:-97dBm, 11ac VHT20 MCS11: -74dBm,
 - 11ac VHT40 MCS0: -93dBm, 11ac VHT40 MCS11: -70dBm,
 - 11ax HE20 MCS0: -96dBm, 11ax HE20 MCS11: -66dBm,
 - 11ax HE40 MCS0: -93dBm, 11ac HE40 MCS11: -63dBm
 - 5 GHz:
 - 11ac VHT20 MCS0: -97dBm, 11ac VHT20 MCS11: -74dBm,
 - 11ac VHT40 MCS0: -93dBm, 11ac VHT40 MCS11: -69dBm,
 - 11ac VHT80 MCS0: -90dBm, 11ac VHT80 MCS11: -65dBm,
 - 11ax HE20 MCS0: -97dBm, 11ax HE20 MCS11: -66dBm,
 - 11ax HE40 MCS0: -94dBm, 11ax HE40 MCS11: -63dBm,
 - 11ax HE80 MCS0: -90dBm, 11ax HE80 MCS11: -61dBm,
 - 11ax HE160 MCS0: -87dBm, 11ax HE160 MCS11: -58dBm

¹Maximum wireless signal rates are the physical rates derived from IEEE Standard 802.11 specifications. Actual wireless data throughput, wireless coverage, and connected devices are not guaranteed and will vary as a result of network conditions, client limitations, and environmental factors, including building materials, obstacles, volume and density of traffic, and client location.

²Use of Wi-Fi 6 (802.11ax), and its features including OFDMA, HE160, and 1024-QAM require clients to also support the corresponding features. The 160 MHz bandwidth is only available on 5 GHz band and may be unavailable in some regions/countries due to regulatory restrictions, and the double channel width refers to 160 MHz compared to 80 MHz for general Wi-Fi 6 routers.

³2.5 Gbps internet speeds require compatible service plans and equipment. 2.5 Gbps and Gigabit ports cannot be concurrently configured as WAN ports.

⁴Saving clients' battery power requires clients to also support the 802.11ax Wi-Fi standard. Actual power reduction may vary as a result of network conditions, client limitations, and environmental factors.

⁵HomeShield includes the Free Basic Plan. Fees apply for the Pro Plan. Visit tp-link.com/homeshield for more information

⁶Use of WPA3 requires clients to also support the corresponding feature.

⁷This router may not support all the mandatory features as ratified in IEEE 802.11ax specification. Further software upgrades for feature availability may be required.

©2022 TP-Link