

1 2 3 4 5 6

A

B

C

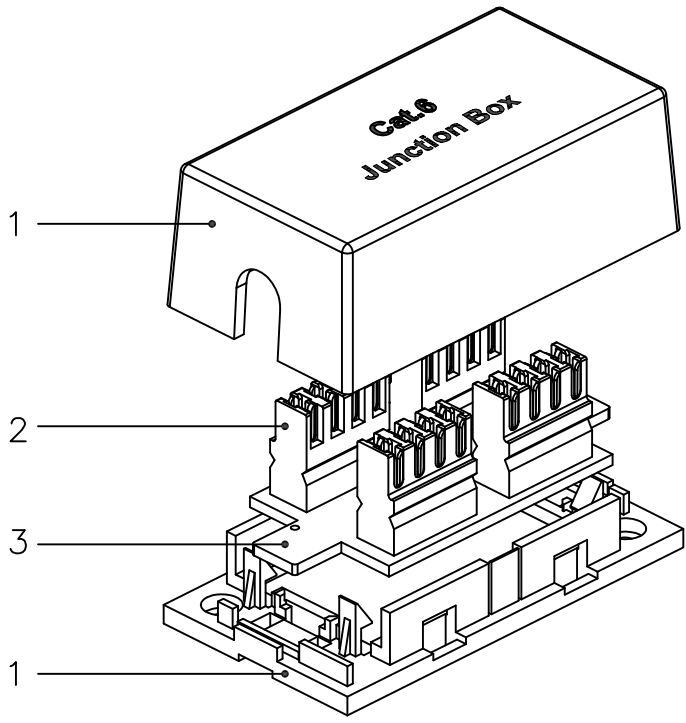
D

A

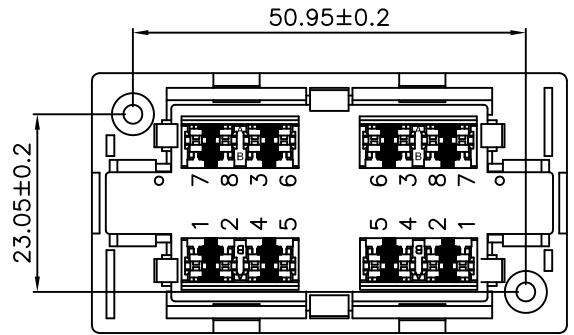
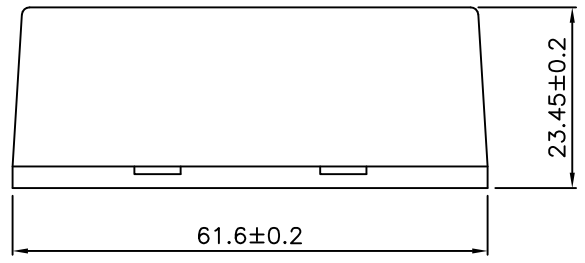
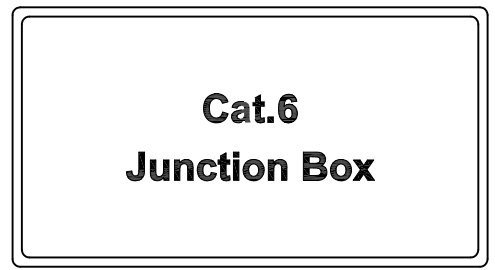
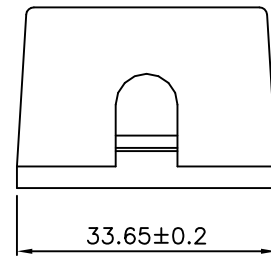
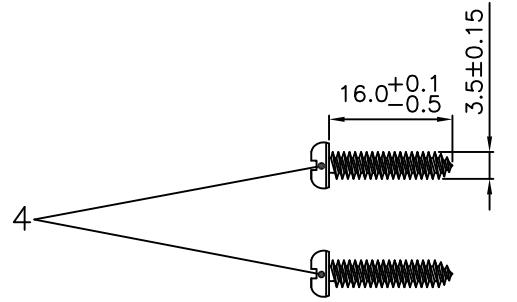
B

C

D



SCALE 1/1



Specification:

- Material :
- 1. Housing : ABS+PC, UL 94V-0.
 - 2. IDC :
 - 2-1. Housing : PC, UL 94V-2.
 - 2-2. Terminal : Phosphor Bronze with Tin plated.
 - 3. PCB : FR4, UL 94V-0.
 - 4. Screw : Carbon Steel(1018),Nickel plated,M3.5*16.0

- Performance :
- a. T568A & T568B wiring Printing on IDC.
 - b. Operating temperature : -10°C to 60°C.(ISO/IEC 11801-1,ANSI/TIA 568.2-D:2018)
 - c. Life(mating cycles) :
 - * IDC : Suitable for 22-26 AWG stranded and solid wire, compatible with 110 punch down tool/ Krone punch down tool.
 - d. The Cat.6 transmission performance is in compliance with the ANSI/TIA 568.2-D:2018 standard.

"#": Matching DIM. "*": Important DIM. Others General DIM.	DRAWING	28.OCT.2021	SJY	
	CHECK	28.OCT.2021	DAY	
	APPROVAL	28.OCT.2021	FRANK	
GENERAL TOLERANCE OF DIMENSIONS X.XXX ±0.005 X.XX ±0.05 X.X ±0.1	DATE		NAME	ITEM NO.: 21.17.3066
	SCALE	1/1 (A4)	UNIT	mm
		DRAWING NO.		S SHEET 1 OF 1
		DRAWING CLASSIFICATION		

1 2 3 4 5 6

10cm