



Datenblatt - Fiche technique - Data sheet

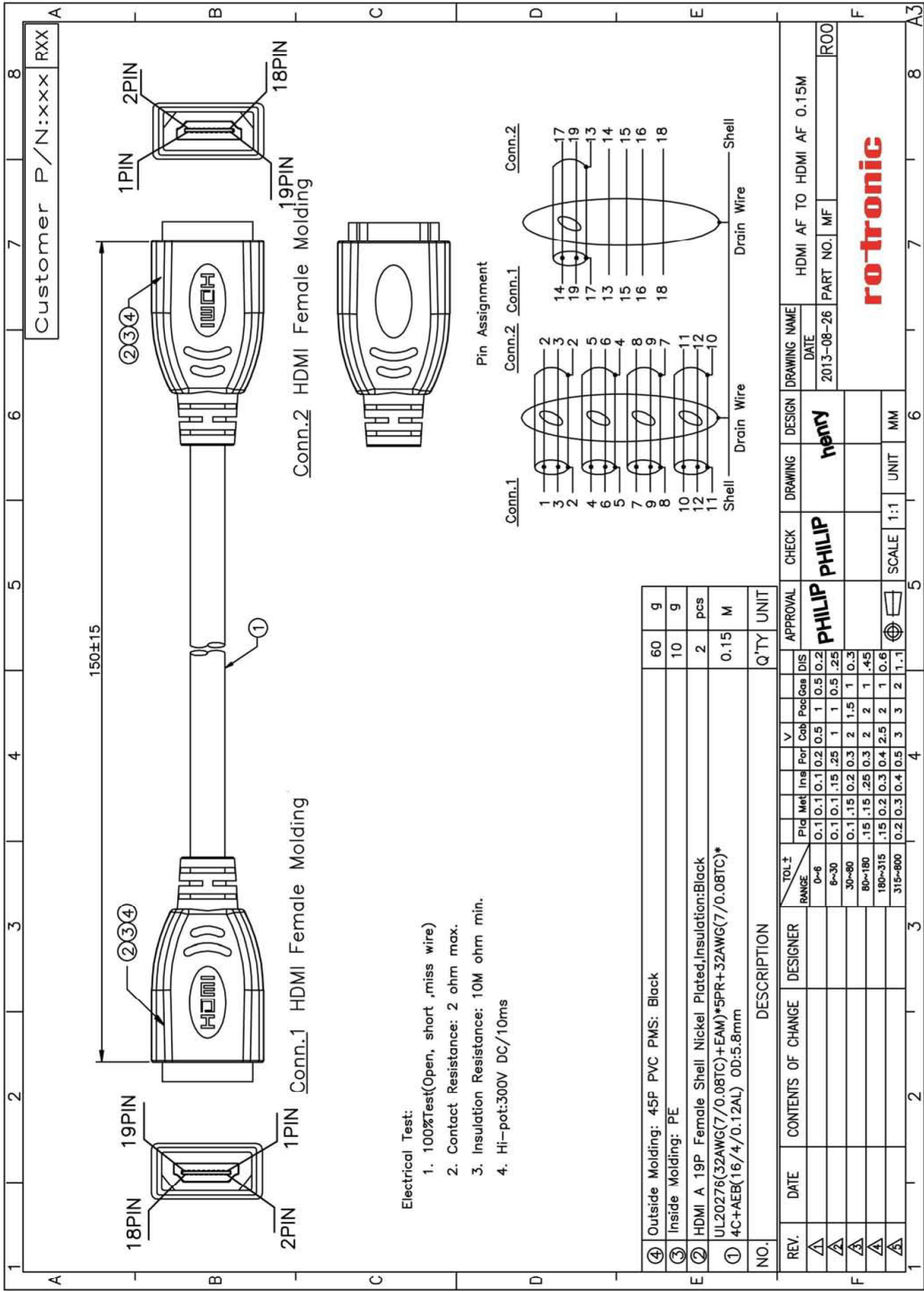
**12.99.3123**



VALUE HDMI Kupplungskabel Buchse - Buchse

VALUE Coupleur HDMI, HDMI F - HDMI F, 0,2 m

VALUE Cableadapter, HDMI F - HDMI F, 0.2 m



Customer P/N:xxx RXX

150±15

1

18PIN 19PIN 2PIN 1PIN

2 3 4

2PIN 19PIN 18PIN

Conn.2 HDMI Female Molding

1

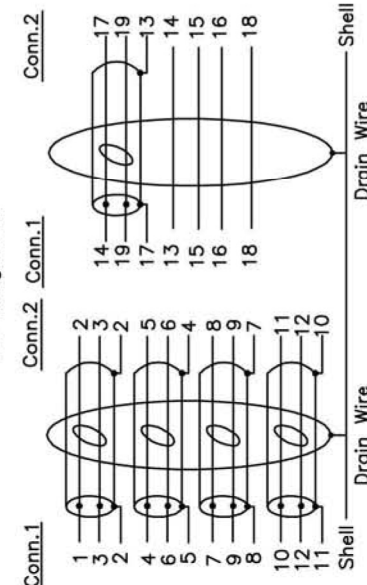
18PIN 19PIN 2PIN 1PIN

2 3 4

Conn.1 HDMI Female Molding



Pin Assignment



Electrical Test:

1. 100%Test(Open, short ,miss wire)
2. Contact Resistance: 2 ohm max.
3. Insulation Resistance: 10M ohm min.
4. Hi-pot:300V DC/10ms

④	Outside Molding: 45F PVC PMS: Black	60	g
③	Inside Molding: PE	10	g
②	HDMI A 19P Female Shell Nickel Plated,Insulation:Black	2	pcs
①	UL20276(32AWG(7/0.08TC)+EAM)*5PR+32AWG(7/0.08TC)*4C+AEB(16/4/0.12AL) OD:5.8mm	0.15	M
NO.	DESCRIPTION	Q'TY	UNIT

REV.	DATE	CONTENTS OF CHANGE	DESIGNER	TOL.±	Pld	Met	Insl	Por	V	DIS	APPROVAL	CHECK	DRAWING	DESIGN	DRAWING NAME
△				0-6	0.1	0.1	0.2	0.5	1	0.5	DIS	PHILIP	henry	HDMI AF TO HDMI AF 0.15M	
△				6~30	0.1	0.1	.15	.25	1	0.5	.25	PHILIP	henry	DATE	
△				30~80	0.1	.15	0.2	0.3	2	1.5	1	PHILIP	henry	2013-08-26	
△				80~180	.15	.15	.25	0.3	2	2	1	PHILIP	henry	PART NO.	
△				180~315	.15	0.2	0.3	0.4	2.5	2	1	PHILIP	henry	MF	
△				315~800	0.2	0.3	0.4	0.5	3	3	2	PHILIP	henry	ROO	
											SCALE	1:1	UNIT	MM	
											rotronic				