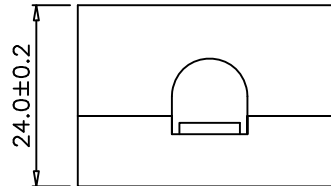
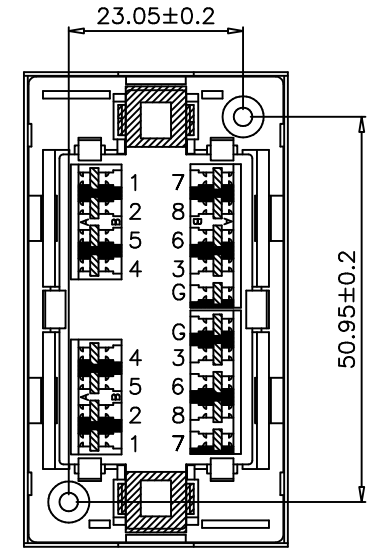
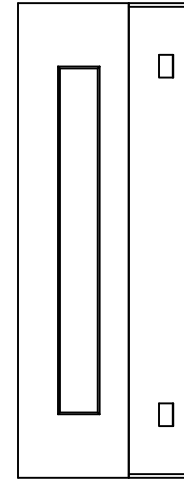
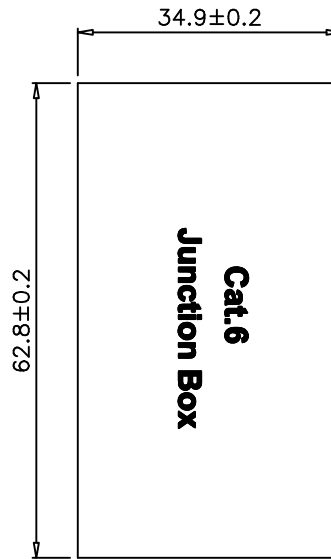


SCALE 1/1



Specification :

Material :

1. Plastic Housing : ABS, UL 94V-0, with white color.
2. IDC Housing : PC+5%GF, UL 94V-2.
3. IDC Terminal material & finished :
 - 3-1. Phosphor Bronze with min. 50 micro-inch Tin plated.
 - 3-2. Compatible with both 110 & Krone punch down tools.
 - 3-3. Suitable for 22-26 AWG stranded & solid wire.
4. Metal Cover : SPCC, 0.5 mm thickness with Nickel plated.
5. Screw : Carbon Steel(1018),Nickel plated,M3.5*16.0

Performance :

- a. Wiring : T568A & T568B.
- b. Insertion force : 900 gm for 8 contacts.
- c. Retention strength : 7.7 kg between Jack and Plug.
- d. Operating temperature : -10°C to 60°C.(ISO/ICE 11801-1,ANSI/TIA/568.2-D:2018)
- e. Durability :
 - Jack : 750 cycles Plug-Jack mating and unmating test, Insertion cycles at 20 cycles/minute max. Contact resistance test per 100 cycles.
- f. The Cat.6 transmission performance is in compliance with the ANSI/TIA 568.2-D:2018 standard.

"#": Matching DIM. "*": Important DIM. Others General DIM.	DRAWING	28.OCT.2021	SJY		
	CHECK	28.OCT.2021	DAY		
	APPROVAL	28.OCT.2021	FRANK		
GENERAL TOLERANCE OF DIMENSIONS X.XXX ±0.005 X.XX ±0.05 X.X ±0.1		DATE	NAME	ITEM NO.: 21.17.3065	
	SCALE	1/1 (A4)	UNIT	mm	DES.: CAT.6 FULL SHIELDED BOX
			DRAWING NO.		
		DRAWING CLASSIFICATION	S	SHEET	1 OF 1
					01