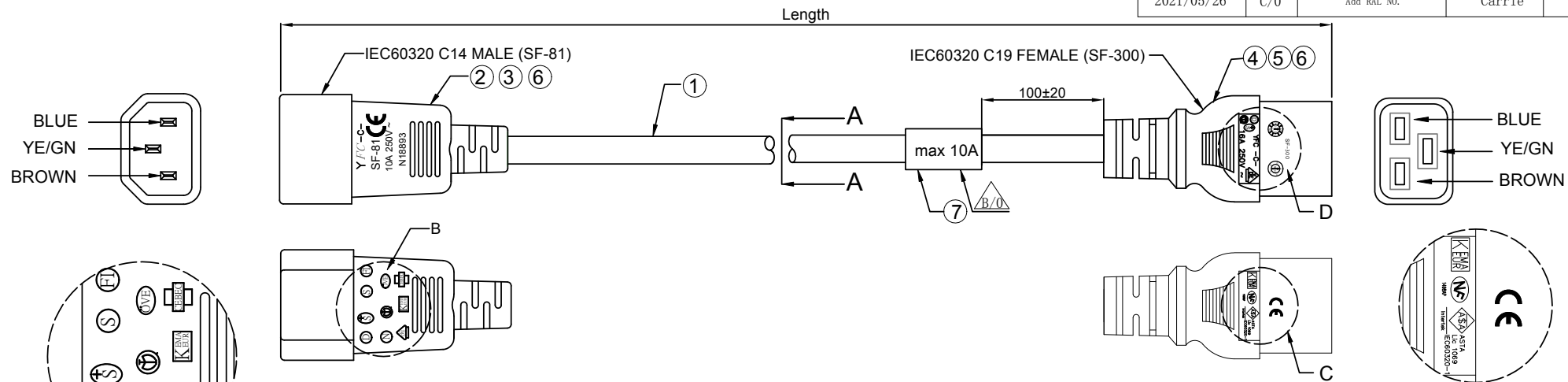
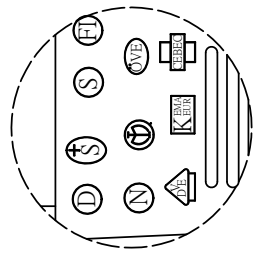


MOLDING: SF-81
SF-300

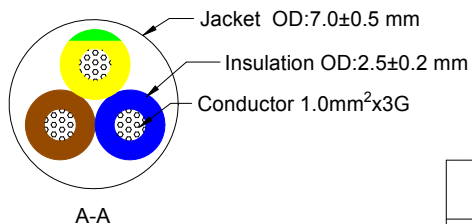
DATE	REV.	REVISION	DRAFTING	CHECKED
2020/11/6	A/0	Initial	Andy	
2021/04/13	B/0	Add label on the SF-300 end	Andy	
2021/05/26	C/0	Add RAL NO.	Carrie	



WIRE MARKING(No.133):
 + S + S + S KEMA-KEUR CEBEC 972 NF-USE 1345
 IEMMEQU H05VV-F 3G1.0MM² V-75 300/500V ORDINARY DUTY NSW17436 YFC BON-EAGLE



B
2:1



Polarity and Conduction and Penetration Test	
Dielectric Voltage Withstand Test : 2000V / 1 Sec	
Electrical Performance (20°C)	
Item	Parameter
Conductor Resistance	≤ 19.5Ω/1000m
Voltage Rating	AC 300V/500V

Item	Color	RAL NO. (similar to)	Length
AK5438	Black	RAL9011	500 ⁺¹⁵ ₋₁₀
AK5439	Black	RAL9011	1000 ⁺¹⁵ ₋₁₀
AK5025	Black	RAL9011	2000±20

PINOUT		
SF-81	WIRE	SF-300
E	YE/GN	E
L	BROWN	L
N	BLUE	N

⑦	Label	Waterproof Label, white background and black text,Print content:max 10A,(YFC P/N:PSA00022L-000081-0N)	1PC
⑥	Molding	Black 40P PVC	AR
⑤	Inner frame	European standard IEC320 C-19 three PIN(SF-300)inner frame,black.	1PC
④	Terminal	SF-300 European standard IEC320(C-19)three hole female terminal,matching 14-18AWG wire	3PCS
③	Inner frame	IEC C14 three PIN (SF81)inner frame,black	1PC
②	Terminal	IEC C14 male terminal,matching 20-16AWG wire,plated nickel.	3PCS
①	CABLE	H05VV-F 3G 1.0mm² Black	AR



Unless specified on the drawing, tolerances are per the follows:		DRAW. NO	YFAC-S200029	TITLE		H05VV-F 3G 1.0mm² SF-81 TO SF-300 Black CABLE ASSY			
X.	±0.20	X°	±3	CUSTOMER	ACT	DRAW	Carrie	DATE	2021.05.26
.X	±0.10	.X°	±0.3	CUST' R P/N	--	CHECK		DATE	
.XX	±0.05			SCALE	NONE	APPROVED		SHEET	1 of 1

No.	TITLE	DESCRIPTION	Q'TY
Cable Spec NO.	-	Part Number	-

Note	<input type="checkbox"/> RoHS2.0	<input type="checkbox"/> Reach	<input type="checkbox"/> GP	<input type="checkbox"/> HF	<input type="checkbox"/> Other
------	----------------------------------	--------------------------------	-----------------------------	-----------------------------	--------------------------------

