



Datenblatt - Fiche technique - Data sheet

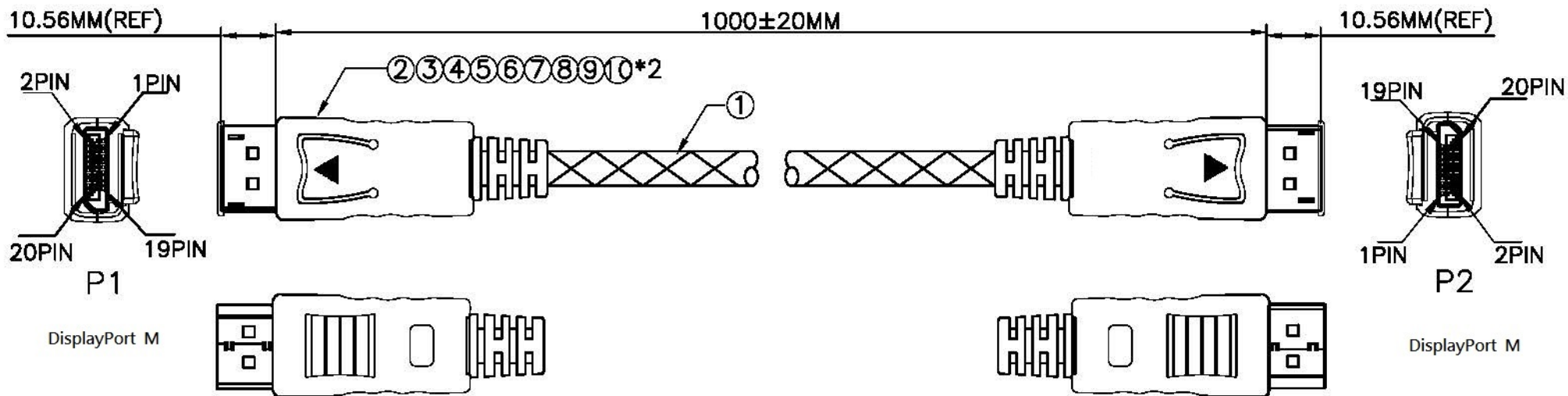
**11.04.5644**



ROLINE GOLD DisplayPort Kabel, DP ST - ST, 1,0m

ROLINE GOLD Câble DisplayPort DP M - DP M, 1,0m

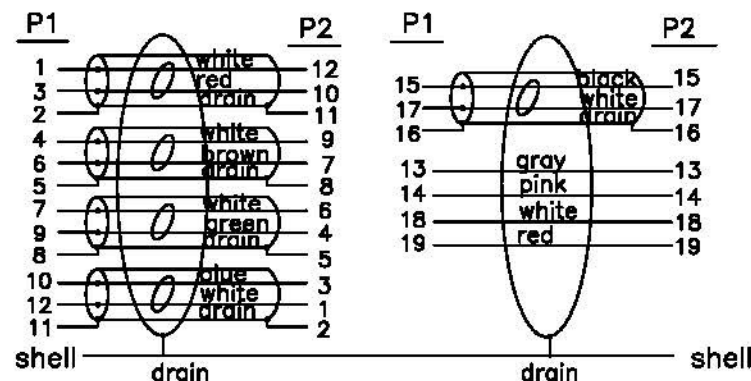
ROLINE GOLD DisplayPort Cable, DP-DP, M/M, 1 m



**Electrical Test:**

1. 100%Test(Open ,short ,miss wire)
2. Contact Resistance: 2 ohm max.
3. Insulation Resistance: 10M ohm min.
4. Hi-pot:300V DC/10ms

**PIN Assignment**



11	Wire Clip OD:6.0mm	2	pcs
10	TRANSPARENT PE	4	g
9	45P BLACK PVC	10	g
8	TUBE BLACK :ø1.5*5mm THIN	0.05	m
7	TUBE BLACK :ø1.0*10mm THIN	0.1	m
6	TUBE BLACK :ø2.5*15mm THIN	0.15	m
5	DisplayPort M TRANSPARENT DUST COVER	2	pcs
4	DisplayPort M(DP01#)ABS Up Shell no mark	2	pcs
3	DisplayPort M(DP01#)ABS Down Shell no mark	2	pcs
2	DisplayPort M Connector with PCB Shell Gold Plated,Pin Gold 3u" Plated	2	pcs
1	UL20276 (24AWG*1P+EAM)*5C+24AWG*4C+MAEB(50%) OD:10.0mm, w/black & yellow net pin 20 removed		m
NO	DESCRIPTION	Q'TY	UNIT

	TOLERANCE	
	INCHES	M/M
.X	.015	.30
.XX	.010	.10
.XXX	.005	.05

**rotronic**

11.04.5644

ROLINE GOLD DisplayPort Cable, DP M /DP M  
1m, black w/yellow & black nylon net

DRAWN BY		SCALE	NONE	DRAWING NO.:	REV. A
CHECK BY		UNIT	MM		
APPD BY		DATE			1/1