

DIGITUS Cat.6A U/FTP installation cable, 100 m, simplex, Eca

DK-1623-A-VH-1
EAN 4016032344117



CAT 6A U-FTP installation cable, 500 MHz Eca (EN 50575), AWG 23/1, 100m paper box, sx, blue

The Digitus® Cat.6A U/FTP installation cable is characterized by the following cable construction 4x2x AWG23/1 and reaches a transmission frequency up to 500 MHz. The halogen free cable jacket is conform to the standard IEC 60332-1, FRNC-B, LSZH-1 and CPR Euro class Eca. The cable is suitable for building structured cabling in the secondary and tertiary area. Compliant with the following standards ISO/IEC 11801, DIN EN 50173, DIN EN 50288-10-1.

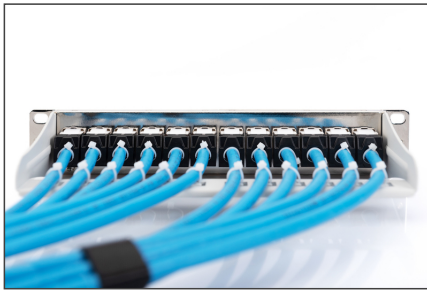
Future-oriented standards and high-end quality for your network.

- Physical properties:
- Conductor: Bare annealed copper, solid AWG 23/1
- System/s of AVCP: AVCP 3
- Total number of insulated conductors: 8, twisted in 4 pairs
- Color code: Blue-white, orange-white, green-white, brown-white
- Individual pair shielding: Aluminum foil, providing 100 % coverage
- Overall shielding: None, with drain wire
- Outer sheath: Eca to B2ca acc. to EN 50575; LSZH
- Outer sheath color: Light blue (RAL 5012)
- Mechanical properties:
- Tensile loading: 150N max.
- Dynamic bending radius: 8x AD mm min.
- Static bending radius: 4x AD mm min.
- Shipping- and storage temperature range: -20 °C up to +60 °C
- Operating temperature range: -20 °C up to +75 °C

- Installation temperature range: 0 °C up to +50 °C
- Overall diameter Simplex (nominal): 7.0 (Eca); 7,2 mm (Dca); 7,6 mm (Cca); 7,6 mm (B2ca)
- Weight (kg/km): 56 kg (Eca); 57 kg (Dca); 58 kg (Cca); 58 kg (B2ca)
- Electrical properties:
- Impedance: 100±15 Ohm @ 4 - 100MHz; 100±25 Ohm @100-500 MHz
- Capacitance: 45 pF/m nominal @ 1 KHz
- Capacitance unbalance (pair-ground): 1.6 pF/m max. @ 1 KHz
- Insulation resistance: 5 GOhm x km min.
- DC loop resistance: 190 Ohm/km max. (2% max. resistance unbalance)
- Voltage resistance: 72 Vdc max.
- Coupling attenuation: CA-Type 2
- Signal propagation delay: 450 nS/100 m max.
- Propagation delay: 15 nS/100 m max.
- Separating class: "c" acc. to EN 50174-2
- NVP: 70%
- Assortment: Twisted Pair Installation Cables
- Category: CAT 6A
- Shielding: U-FTP, pairs in metal foil
- CPR: Eca
- CPR: Eca
- Length: 100 m
- Color: light-blue
- Jacket: LSOH
- Structure: 4 x 2 AWG 23/1, solid twisted pair

Logistics						
	Number (pcs)	Weight (kg)	Depth (cm)	Width (cm)	Height (cm)	cm³
Packaging Unit Carton	1	4.50	33.00	32.00	11.00	11,616.00
Packaging Unit Inside	1	4.50	33.00	32.00	11.00	11,616.00
Packaging Unit Single	1	4.50	33.00	32.00	11.00	11,616.00
Net single without Packaging	1	0.00	0.00	0.00	0.00	0.00

More images:



DIGITUS

AWG 23/1 | 500 MHz | 10 Cat.6 Ethernet | CAT 6a | 200V, 75° | 6 LSZH | E_{ca} CPR class

CAT 6a U/FTP Installation Cable, 100 m, Simplex, E_{ca}

DIGITUS

DK-1623-A-VH-1 // CAT 6, U/FTP Installation Cable, 100m, Simplex, E_{ca}

DK-9555

DIGITUS

DK-1623-A-VH-1 // CAT 6, U/FTP Installation Cable, 100m, Simplex, E_{ca}

Kabelquerschnitt
Cable cross section

DIGITUS

Produktinformationen / Product Information		Physikalische Spezifikationen / Physical Properties	
Hersteller / Manufacturer	Digitus (China, Taiwan, Hong Kong, Malaysia)	Leiter / Conductor	Neun Kupferdrähte (9x0,75) Twisted Pair mit einem 100 Ohm Widerstand (Shielded CAT 6a)
AWG / AWG	23/1 (23 AWG Draht, 1 Leiter + 12 Leiter + 12 Leiter + 12 Leiter + 12 Leiter + 12 Leiter + 12 Leiter + 12 Leiter + 12 Leiter + 12 Leiter)	Leitung / Shielding	40 Ohm Twisted Pair, 100 Ohm Twisted Pair, 100 Ohm Twisted Pair, 100 Ohm Twisted Pair, 100 Ohm Twisted Pair, 100 Ohm Twisted Pair, 100 Ohm Twisted Pair, 100 Ohm Twisted Pair, 100 Ohm Twisted Pair, 100 Ohm Twisted Pair
Norm / Norm	ISO/IEC 11801, IEC 60332-1, IEC 60332-3, IEC 60332-5-10, IEC 60332-5-11, IEC 60332-5-12, IEC 60332-5-13, IEC 60332-5-14, IEC 60332-5-15, IEC 60332-5-16, IEC 60332-5-17, IEC 60332-5-18, IEC 60332-5-19, IEC 60332-5-20, IEC 60332-5-21, IEC 60332-5-22, IEC 60332-5-23, IEC 60332-5-24, IEC 60332-5-25, IEC 60332-5-26, IEC 60332-5-27, IEC 60332-5-28, IEC 60332-5-29, IEC 60332-5-30, IEC 60332-5-31, IEC 60332-5-32, IEC 60332-5-33, IEC 60332-5-34, IEC 60332-5-35, IEC 60332-5-36, IEC 60332-5-37, IEC 60332-5-38, IEC 60332-5-39, IEC 60332-5-40, IEC 60332-5-41, IEC 60332-5-42, IEC 60332-5-43, IEC 60332-5-44, IEC 60332-5-45, IEC 60332-5-46, IEC 60332-5-47, IEC 60332-5-48, IEC 60332-5-49, IEC 60332-5-50, IEC 60332-5-51, IEC 60332-5-52, IEC 60332-5-53, IEC 60332-5-54, IEC 60332-5-55, IEC 60332-5-56, IEC 60332-5-57, IEC 60332-5-58, IEC 60332-5-59, IEC 60332-5-60, IEC 60332-5-61, IEC 60332-5-62, IEC 60332-5-63, IEC 60332-5-64, IEC 60332-5-65, IEC 60332-5-66, IEC 60332-5-67, IEC 60332-5-68, IEC 60332-5-69, IEC 60332-5-70, IEC 60332-5-71, IEC 60332-5-72, IEC 60332-5-73, IEC 60332-5-74, IEC 60332-5-75, IEC 60332-5-76, IEC 60332-5-77, IEC 60332-5-78, IEC 60332-5-79, IEC 60332-5-80, IEC 60332-5-81, IEC 60332-5-82, IEC 60332-5-83, IEC 60332-5-84, IEC 60332-5-85, IEC 60332-5-86, IEC 60332-5-87, IEC 60332-5-88, IEC 60332-5-89, IEC 60332-5-90, IEC 60332-5-91, IEC 60332-5-92, IEC 60332-5-93, IEC 60332-5-94, IEC 60332-5-95, IEC 60332-5-96, IEC 60332-5-97, IEC 60332-5-98, IEC 60332-5-99, IEC 60332-5-100	Materialien / Materials	<ul style="list-style-type: none"> Leitung / Conductor: 9x0,75 mm² Isolierung / Insulation: PVC, PE, LSZH Adressierung / Shielding: 40 Ohm Twisted Pair, 100 Ohm Twisted Pair

DIGITUS

Leitungsgruppen / Transmission Properties

Paar / Pair	AWG	AWG	AWG	AWG	AWG	AWG	AWG	AWG	AWG
1	24	24	24	24	24	24	24	24	24
2	24	24	24	24	24	24	24	24	24
3	24	24	24	24	24	24	24	24	24
4	24	24	24	24	24	24	24	24	24
5	24	24	24	24	24	24	24	24	24
6	24	24	24	24	24	24	24	24	24
7	24	24	24	24	24	24	24	24	24
8	24	24	24	24	24	24	24	24	24
9	24	24	24	24	24	24	24	24	24
10	24	24	24	24	24	24	24	24	24

Intertek

ETL Verified Certificate of Conformance Number: 1142253027-001

Product: CAT 6 U/FTP Installation Cable, 100m, Simplex, E_{ca}

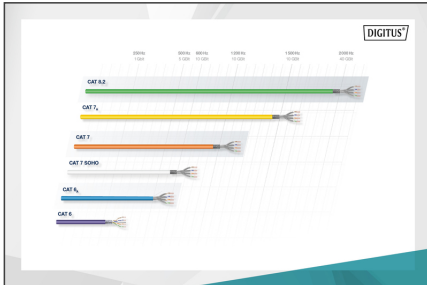
GHMT

Certificate No. 16884-11

Category 6a

Zertifikat No. 16884-11

Kategorie 6a



DIGITUS

CE Markierung

B2, **C_{ca}**, **D_{ca}**, **E_{ca}**

1+, **3**

s1a, **d1**, **a1**

